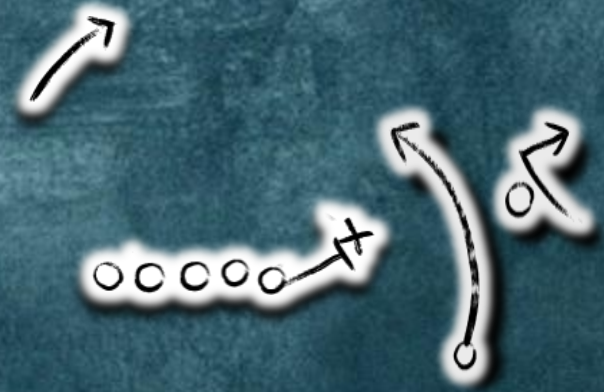




# Emerald Ash Borer Monitoring Training

# The Game Plan

- Product Information
- Assembly Instructions
- Hanging Instructions
- Take Down Instructions



aPhinity EAB 

# Product Information



Sylvar **Green**

- Green prism trap
- UV resistant heavy duty corrugated plastic
- Includes galvanized steel hanger
- Includes galvanized steel trap spreader



aPhinity **EAB**

- (3Z)-Lactone lure
- Female sex pheromone for *Agrilus plannipennis*
- 3 mg load rate
- Rubber septa release device



- Hexenol lure
- Host tree volatile attractant
- 5 ml load rate
- Plastic pouch + Kraft paper release device

# Assembly Instructions

## STEP 1



Remove trap from the packing box. Traps are packaged in pairs, sticky side facing in.



## STEP 2



Peel traps apart. Wear gloves! You may find yourself in a sticky situation.

## STEP 3



Fold the trap into a prism – Sticky side out and line up the tabs with their corresponding slots.



# Assembly Instructions Pt. 2

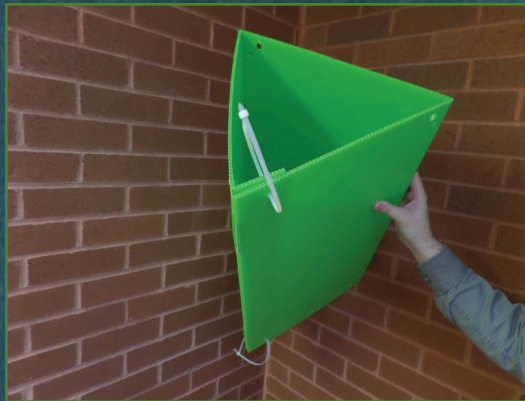
## STEP 3



Insert the tabs into the slots.



## STEP 4



Insert zip ties into the top and bottom of the tab panel. Secure ties.

## STEP 5



Attach the hanger to the trap spreader by feeding the hanger clip through the hoop at the top of the spreader.



# Assembly Instructions Pt. 3

## STEP 7



Attach the trap spreader using the three small holes located at the top of the trap, in the center of each panel



## STEP 8



Pierce the (3Z)-lactone septa with the safety pin. Pierce the hexenol pouch lure with the second safety pin. DO NOT pierce the pouch below sealed line. Attach both lures to the loop below the wire spreader.



## COMPLETE!



You are ready for the field!

# Hanging Instructions



Wear Safety Equipment: Hard Hat, Safety Glasses, Steel Toe Boots and Latex Gloves



Use a modified telescoping pole, slingshot, or alternative preferred hanging method



Hang traps in the mid-upper canopy on the south facing side of the ash tree



Hang traps on a thick branch, usually 1" thick or greater to avoid potential breaks



Carefully record the location of each trap.



# Hanging Example



**SYLVAR**  
TECHNOLOGIES INC.



# Take Down Instructions



Wear Safety Equipment: Hard Hat, Safety Glasses and Latex Gloves



Use a modified telescoping pole, ladder, or other required equipment



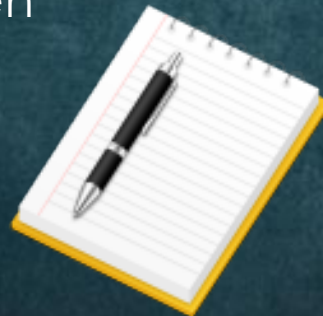
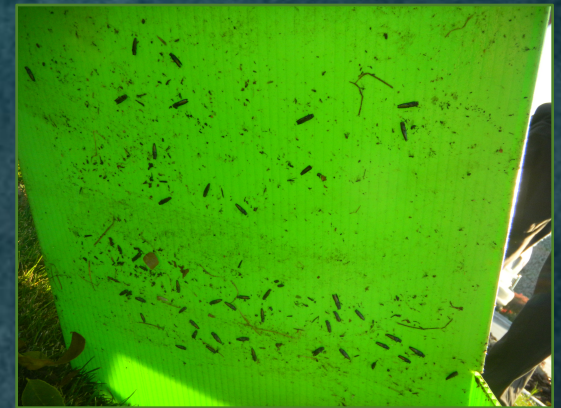
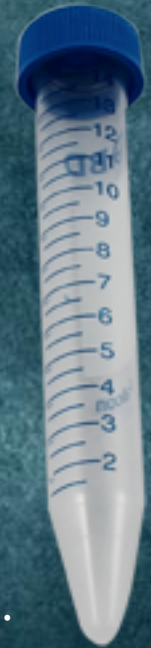
Carefully remove suspect EAB and place them in a dry vial. Contact your local CFIA branch for further instructions



Properly dispose of trapping materials, use plastic sheeting or alternative for transport



Carefully record findings as per location, and number of specimen



# FAQ #1

How do I store my trapping materials?

Lactone and Hexenol Lures

-18°C



Green Prism Traps

Room Temp.



# FAQ #2

What are the release rate rates of the lures?

Lactone (Pheromone)	50 $\mu$ g/day	
Hexenol (Host Tree Volatile)	50mg/day	

# FAQ #3

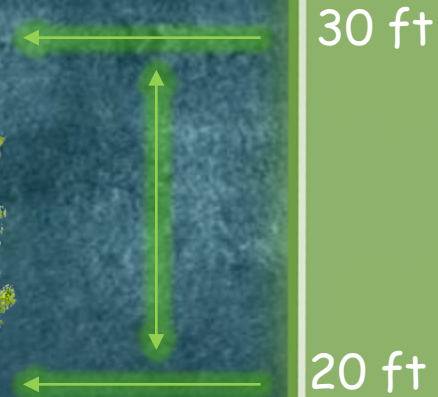
## When should the traps be hung?

There is no “one-size-fits-all” answer. Depending on your geographic location and management plan, the trapping window will vary slightly. The best generalized answer in North America is between May and August.



# FAQ #4

How high should we place the trap?



Mid to High

# Resources

- BioForest Technologies Inc.
  - <http://www.bioforest.ca/>
- Canadian Food Inspection Agency
  - <http://www.inspection.gc.ca/plants/plant-pests-invasive-species/insects/emerald-ash-borer/eng/1337273882117/1337273975030>
- City of Mississauga Management Plan
  - <http://www.mississauga.ca/portal/residents/parks-emerald-ash-borer>
- City of Oakville Management Plan
  - <http://www.oakville.ca/residents/emerald-ash-borer.html>